



## COLD STORAGE AND COOLER CABINETS PRODUCT CATALOGUE

## ABOUT US

EKAR Industrial Cooling; It is an engineering company based in TURKEY / Ankara, providing project design, installation services and technical support on "INDUSTRIAL COOLING SYSTEMS, COLD STORAGES, COOLER CABINETS and SHELF SYSTEMS" with nearly 15 years of expertise.

With years of experience in its sector, it adopts a better and higher quality service policy as a principle and offers its customers fast solutions from A to Z regarding cooling.

With its expert staff and on-site correct practices, during and after the project aims for maximum customer satisfaction.

Regards,





**COLD  
STORAGES**



## Corrugated Sandwich Panel

Our cold room panels, consisting of high density (40-42 kg/m<sup>3</sup>) polyurethane material between PVC coated or polyester painted galvanized sheet metal, are produced with a corrugated surface to increase impact resistance.

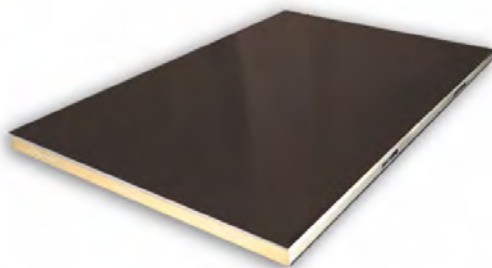
Corrugated panels have a distributed load carrying capacity of 2000 kg/m<sup>2</sup>, and optionally, non-slip CrNi or 200 micron PVC coated sheet metal can be used on plywood on the surface. All our panels are produced with maximum energy efficiency guarantee. Otherwise, since heat loss is high in cold air rooms, energy consumption will also be high.

All our panels are produced according to the "CE Fire Resistance Certificate" conditions.



## Floor Panel

Our standard production is interlocking panels with 10 mm thick Plywood on the upper surface and 40 (+/-2) density polyurethane injected between the lower surface and galvanized sheet metal. Floor panels have a distributed load carrying capacity of 2000 kg/m<sup>2</sup>.



## General Technical Specifications of Panels

Panel Width (cm)	: 30 - 40 - 50 - 110 - 111
Panel Thickness (mm)	: 50 - 60 - 80 - 100 - 120 - 150 - 180 - 200
Panel Density	: 40±2 kg/m <sup>3</sup>
Sheet Coating Types	: Polyester - PVC - CrNi
Color	: RAL 9002
Pattern	: Corrugated - Plain
Insulation	: Polyurethane
Sheet Thickness (mm)	: 0.50 mm

## Corner Panel

In wall corner connections to be made with corner panels, easy assembly is provided by the possibility of locking the panels together.

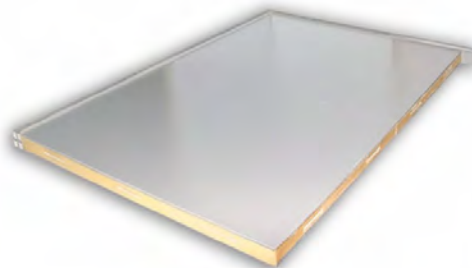
The main idea behind this ease of installation is that the wastage will be minimal, or in many cases, none at all. Thus, the problem of cutting the panel, which is the most important problem frequently encountered during assembly, is eliminated.

Thanks to the corner panel, minimum installation time and maximum insulation rate are ensured. Like all our other panels, it has a "Fire Resistance" certificate.

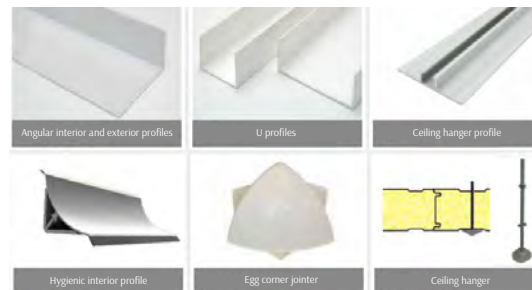


## Flat Surface Sandwich Panel

This panel, which has the same features as the industrial cold storage panel, is used to create a more hygienic environment due to the absence of grooves on its surface.



## Panel Mount Accessories





## Double Wing Swing Cold Room Door

It is used in cold and frozen storage rooms. It is a qualified and privileged product. It is used in rooms that require sliding doors but do not have enough space. It can be produced in various sizes.



## Industrial Hinged Door

It is used in cold and frozen storage rooms. These are doors that can be opened and closed quickly because they are deadlocked. They are the most frequently preferred storage doors. Standard production dimensions are 90x190 cm. However, it can also be produced in special designs and various sizes.



## Panel Mount Standard Door

It is used in cold and frozen storage rooms. These are panel-mounted doors that can be opened and closed quickly due to their impact locking. They are the most frequently preferred storage doors. It is produced in 90x190 dimensions. It can also be produced in special designs and various sizes.



## Solid Wing Cold Room Doors

It is chrome-nickel and normal yellow type and is used in cold and dull storage rooms. It is a very hygienic and stylish product as it is produced entirely from a single piece of metal sheet. These are cold and dull storage room doors that can be opened and closed quickly due to their impact locking. It is produced in 90x190 cm dimensions. It can also be produced in special designs and various sizes.







## Monorail Hinged Door

It is used as a gateway for processing and storage areas connected by monorail lines. It operates as a single wing to the right or left. It can be produced in 90x190 cm or various sizes.



## Monorail Sliding Door

It is used as a gateway for processing and storage areas connected by monorail lines. It works as a single wing sliding to the right or left. It can be produced in various sizes.



## Sliding Door

These are railed doors that can be opened at wide intervals to the right or left. It is used in cold or frozen storage rooms. It can be produced in various sizes.



## Single and Double Wing Flip-Flap Service Doors

It is used for rapid transition between storage areas. It is produced as a single wing, panel or wall mountable. The wing is 40 mm thick, can be opened 180 degrees in both directions and can always remain open when necessary. It can be produced in various sizes.





## Monoblock Compact & Ceiling Mounted Devices

It is produced in 21 different models with a cooling capacity range of 1,198 watts – 6,354 watts, suitable for the conditions of cold and frozen storage rooms. It has a hermetic compressor and air-cooled condenser.

The device is compact and ceiling type and is shipped with all its equipment assembled and gas charged. It is cassette suitable for outdoor weather conditions.

It complies with European Union norms and is manufactured with CE marking. It has a hot gas defrost device.



## Industrial Devices

It is produced in 62 different models with a cooling capacity range of 4,820 watts – 119,900 watts, in accordance with the conditions of cold and frozen storage rooms.

It has a semi-hermetic compressor and air-cooled condenser. The device has a remote control panel. It is cassette suitable for outdoor weather conditions.

It complies with European Union norms and is manufactured with CE marking. The outdoor unit and indoor unit are delivered nitrogen charged. It is shipped ready for installation with the electrical panel and all automatic control elements.



## Split Devices

It is produced in 33 different models with a cooling capacity range of 1,198 watts – 14,590 watts, in accordance with the conditions of cold and frozen storage rooms. It has a hermetic compressor and air-cooled condenser.

The device has a remote control panel. It is cassette suitable for outdoor weather conditions.

It complies with European Union norms and is manufactured with CE marking. The outdoor unit is delivered nitrogen charged. It is shipped ready for installation with the electrical panel and all automatic control elements.



## Central System Devices

It is produced in a wide range of capacities to suit the conditions of cold and frozen market shelves and/or storage rooms. Since they can be specially designed on a project basis, they can meet multi-functional cooling needs.

Scroll or Semi-Hermetic compressors have very low sound levels because they operate in a sound-insulated cabin. The sound-insulated cabin is designed to suit the outside weather conditions. It can be offered with a separate condenser as an option.

It complies with European Union norms and is manufactured with CE marking. It is shipped ready for installation with the electrical panel and all control elements.



## LED Lighting

The bulb life of the majority of light sources commonly used today is between 1000-5000 hours. This figure is 6,000-12,000 hours for bulbs used in industrial lighting. At the end of this period, bulb replacement is required, and it should not be forgotten that the igniter ballast circuit in fluorescent and gas-discharge bulbs may also break down.

In LEDs, if a good thermal design is made and constant current driver circuits are used, the life will be over 50,000 hours. It was voted the most parsimonious in rugged, reliability and energy evaluation. It has increased its preference as it has no problems with malfunction, replacement and maintenance.



## Centrifugal Humidification Systems

They are automatic humidification devices controlled by an automation system in order not to reduce the quality and moisture content of the products stored due to moisture loss, generally in fresh food warehouses and cold storages conditioned at positive temperatures. It also helps the cooling process by controlling the humidity of cold rooms at a certain level, thanks to the heat exchange that occurs during evaporation.

### Features:

- It can be easily connected to mains water or direct water tanks.
- Different usage areas, (such as wall surfaces)
- Durable and trouble-free structure,
- A good disinfection and deodorization tool for chemicals,
- High functionality for low temperature warehouse areas,
- Easy adaptation to your automation systems.



## PVC Strip Curtain

It increases economic efficiency by saving energy by reducing hot and cold air losses. It protects the business from birds, flies, insects and all flying insects, as well as odors, gases, dust, etc. that pollute the air. It also reduces inputs.

Provides hygiene in the business. It is easy to install. It cuts off welding light that is harmful to the eyes in welding compartments. It is light permeable for a safer work environment. Partially cuts machine noise. Due to its structure, it requires minimum maintenance. PVC strip curtains are in full compliance with the Turkish Food Codex and relevant regulations.



## Cold Room Shelves

Dimensions (cm) : 46, 53, 61 x 091 x 183 / 46, 53, 61 x 107 x 183 46, 53, 61 x 122 x 183 / 46, 53, 61 x 137 x 183 / 46, 53, 61 x 152 x 183  
46, 53, 61 x 183 x 183 shelves are available in different sizes.



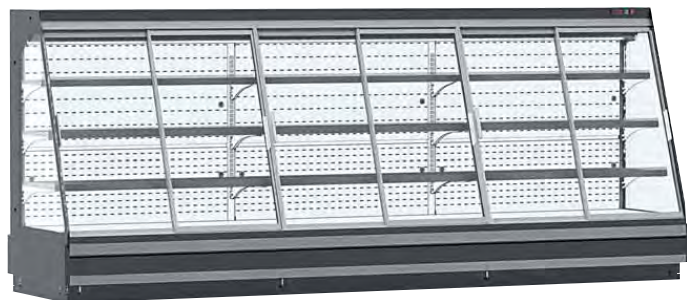
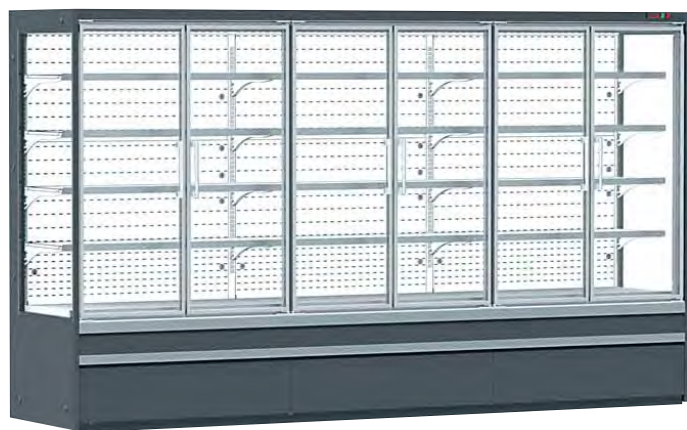




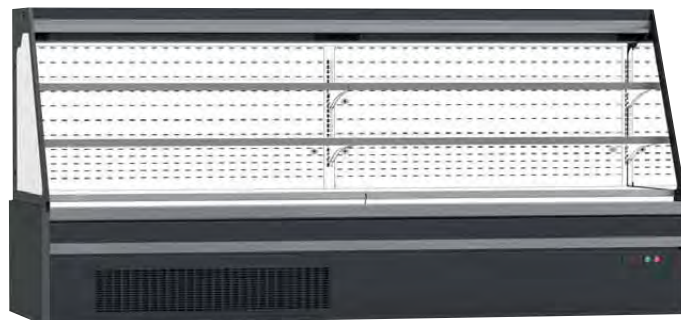
**COOLER  
CABINETS**



## External Motor Models



## Internal Motor Models





## External Motor Models



## Internal Motor Models







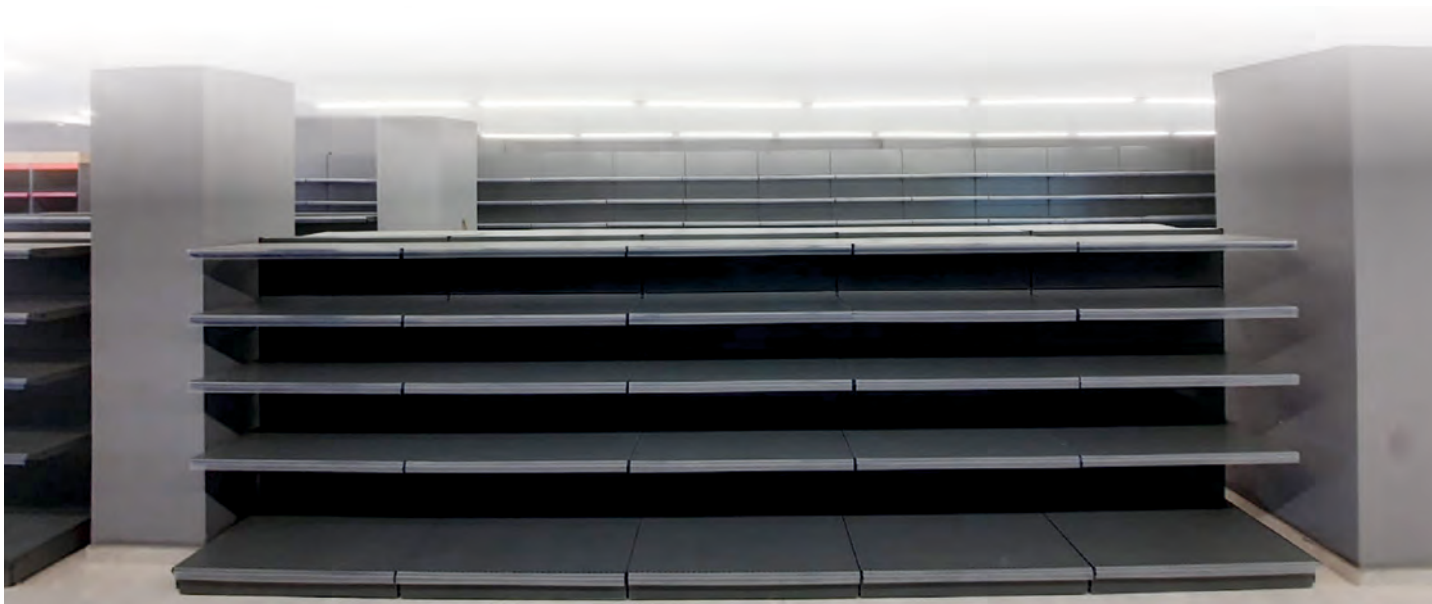
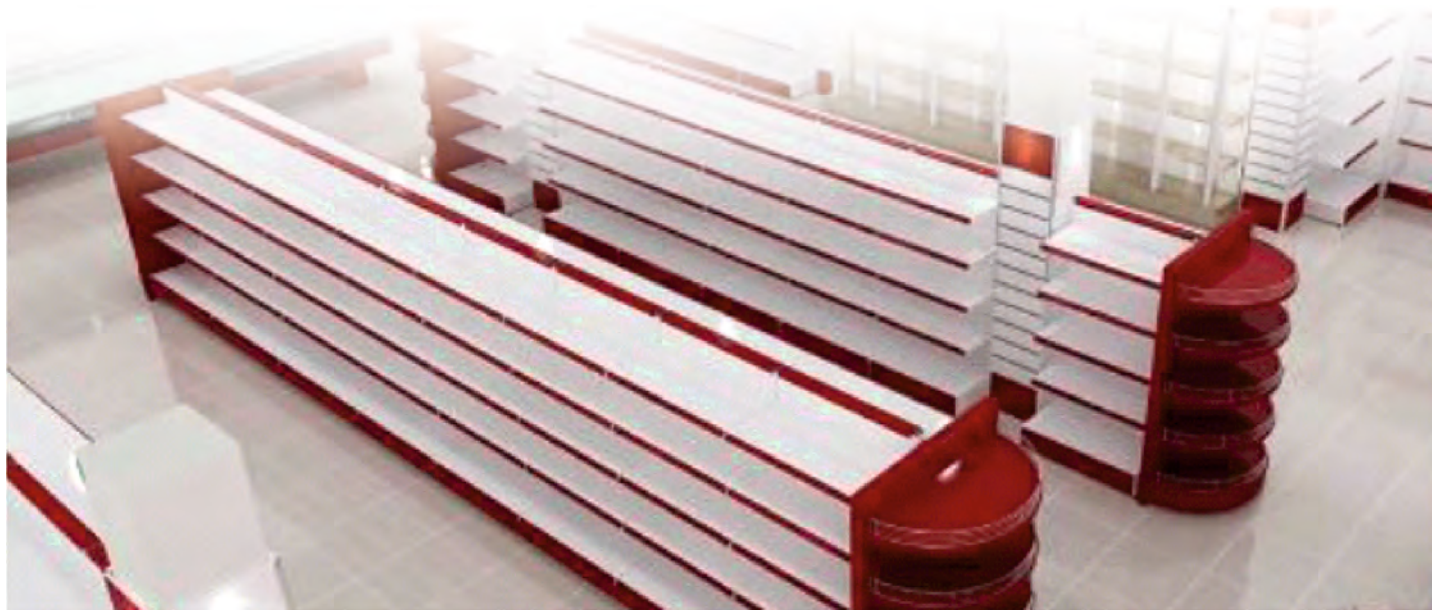
\* Production is made in different sizes and models suitable for every place





## MARKET SHELVES

\* Production is made in different sizes and models suitable for every place







# MARKET SHELVES

\* Production is made in different sizes and models suitable for every place



## REFERENCES

Some of our references whose projects we have completed are;



INDUSTRIAL  
COLD STORAGES  
COOLER CABINETS  
MARKET SHELVES  
PRODUCTION - INSTALLATION AND  
SERVICE SERVICES



[www.ekarsogutma.com.tr](http://www.ekarsogutma.com.tr)  
[info@ekarsogutma.com.tr](mailto:info@ekarsogutma.com.tr)  
Karapürçek Mah. 454.Sok. Akseli Apt. No: 3A  
Altındağ / ANKARA - TURKEY  
+90 501 330 64 50

